

SYSTRAN 5.0

Enterprise Solutions™

Worldwide Leader in Language Translation Automation Solutions for Enterprises

In today's internet age, we live in a global world with fierce business competition. To gain a competitive edge, companies must adapt to the new market rules and adopt an offensive attitude with regards to their communication strategy.

Defining strategy globally and acting locally requires the implementation of structured processes to manage communication efficiently and coherently. Often, the organisation handles this via an enterprise web content management approach. This is a good starting point, but the organisation can make its communication much more effective if it is localised in the relevant languages.

Indeed, a message is all the more efficient if it is received by the recipient in his or her native language. To convey a coherent message in today's global world in multiple languages requires rigour, the implementation of web content management and formalised and controlled translation processes.

Translation has become a strategic factor in enterprise communication policy, so much so that large translation agencies are today responsible for the entire multilingual globalisation processes for large international companies.

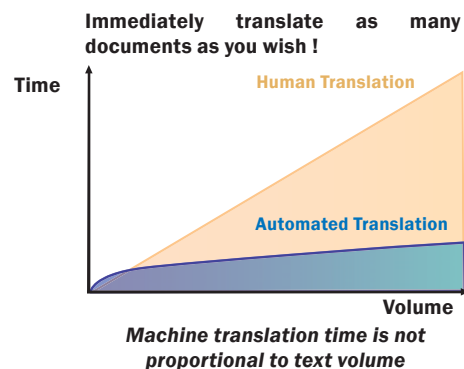
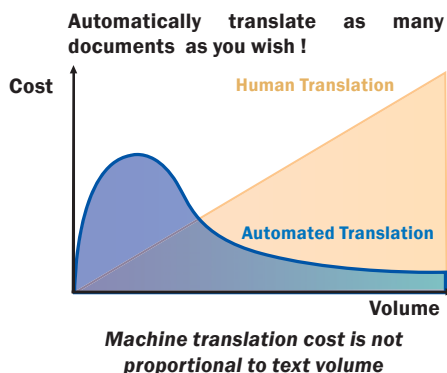
Limits of the Traditional Model

With continually increasing volumes of content to manage and publish, companies can no longer settle for a traditional approach for the production of its localised information. Restricted by budget constraints, companies are forced to limit the number of translations. They therefore handle a limited number of languages, or only localise part of their information databases.

This reductive approach affects communication performance and creates the risk of incoherence between information produced by authors and the content translated into the different languages. To avoid this, companies must modify their work model and automate their translation processes.

For usage related to the simple understanding of text, the document source can be handled fully automatically in the majority of cases.

For usage related to the publication of text, an automatic approach enables productivity gains during initial translation, and also during document revision by a translation professional.



Enterprise Solutions

SYSTRANBox

Put an automatic translator at the disposal of your intranet or internet site and increase the number of visitors to your site.

SYSTRANLinks

Make your website multilingual by placing dynamic links on your homepage. Your visitors can navigate in the language of their choice.

SYSTRAN Open API

Use SYSTRAN's API from your Java or C# applications. The easily specifiable SOAP call functions allow rapid integration in the enterprise application of your choice (intelligence portal, RSS sources, web content management solutions or collaborative products).

Language Pairs Available

- English ⇔ French
- English ⇔ Spanish
- English ⇔ German
- English ⇔ Italian
- English ⇔ Portuguese
- English ⇔ Swedish
- English ⇔ Dutch
- English ⇔ Greek
- English ⇔ Russian
- English ⇔ Japanese
- English ⇔ Korean
- English ⇔ Chinese
- English ⇔ Arabic

- French ⇔ English
- French ⇔ Spanish
- French ⇔ German
- French ⇔ Italian
- French ⇔ Portuguese
- French ⇔ Dutch
- French ⇔ Greek

Centralised Architecture that Benefits All

SYSTRAN Enterprise is designed with a server architecture in order to centralise personalised terminological resources. With this approach, companies can build and leverage their vocabulary and translation memories, and place them in databases to make them available by all users.

An administrator or translation experts can design and enrich specialised dictionaries, define the company's technical terms and put them at the disposal of the SYSTRAN translation engine.

Each user can exploit these resources in a transparent manner simply specifying a translation profile.

With this centralised architecture, the terminological resources of the company – a real linguistic reference point – can be exploited by all of the applications and company members who need this service (search portals, collaborative tools, forums, technical support management applications, technical documentation department, legal department, intellectual property managers, R&D department, etc).

SYSTRAN Productivity Tools

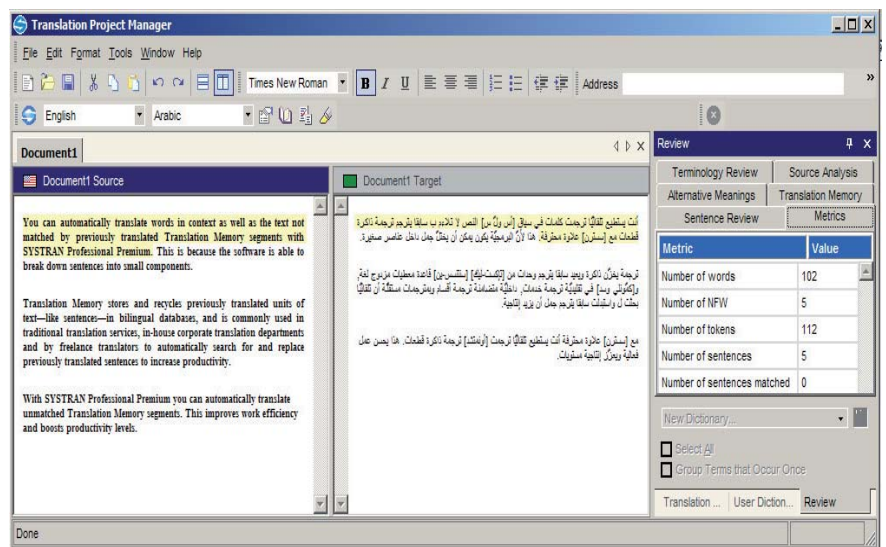
SYSTRAN offers companies that adopt a server architecture the same productivity tools as those included in the Windows based Desktop Professional products.

SYSTRAN Toolbar is 1 click away on the Windows office, to instantly translate all texts, documents or messages. This utility can also be installed within Office applications such as Outlook, Word, Excel, PowerPoint and Internet Explorer.

Use SYSTRAN Dictionary Manager (SDM), Windows professional application, to define and manage the bilingual and multilingual terminological resources. This tool structures your industry-specific vocabulary in the form of specialised dictionaries and classifies your terms by domain to finely manage the application context of these words and reduce the risk of ambiguity. Finally, with SYSTRAN SDM, you can build translation memories, a library of pre-translated and validated phrases which will be automatically analysed and taken into account, benefiting all user's translations.

Use SYSTRAN Translation Project Manager (STPM), Windows professional application, to help translators and administrators enrich dictionaries and translation memories.

All these productivity tools are strictly identical to the applications available in SYSTRAN Professional Standard and Premium, except for the fact that they use the enterprise translation engine remotely, repository of the central resources of the company terminology.



SYSTRAN Translation Project Manager (STPM) displays text side by side, with sentence synchronization. Several help tools are available on the right, to review text and build terminologies.

SYSTRAN Enterprise Workgroup Server

Easy to install and configure, SYSTRAN Enterprise Workgroup Server is the ideal product for small & medium enterprises or the departments of large companies that want to rapidly deploy an automatic translation service using the company vocabulary.

The access portal to SYSTRAN Enterprise Workgroup Server can be easily adapted to the company intranet integrated in an existing portal or simply put at the disposal of employees via a web link.

To have a translator that understands the technical terms and specialised vocabulary related to the company's activity is extremely practical and significantly contributes to the level of collaboration between teams of different nationalities.

To receive an e-mail in a foreign language which cannot immediately be understood, to send a message or a document to foreign recipients - how many times are we faced with similar situations, where the availability of a translator could help us avoid misunderstandings ?

Access to the service is greatly simplified, allowing users to specify the source document, the language pair and the translation profile. The document is translated almost instantaneously in a simple click.

SYSTRAN, Enterprise Workgroup Server makes it possible to translate Microsoft Word, Outlook, PowerPoint, Excel formats, Web pages in Internet Explorer™, and other universally used file formats – such as TXT, RTF, PDF and XML - directly from your computer, and maintains the original document layout.

An intranet environment makes it possible for employees to share the user defined dictionaries with the specific company terminology as well as pre-translated and revised content, to improve the overall translation quality. Translation resources are stored on the company server, with all the features accessible by your collaborators from a Windows computer.

SYSTRAN Enterprise Global Server

Perfectly integrated in the information system and capable of evolving over time, SYSTRAN Enterprise Global Server is the SYSTRAN solution specifically designed for large organisations. The engine's technical architecture is designed to meet the needs of large internet portal applications, where SYSTRAN handles several million translations daily for thousands of users.

The SYSTRAN server system includes front and back-end modules which are deployed in cluster and crossed modes, in order to offer redundant services, with high availability and the ability to evolve.

SYSTRAN Enterprise Global Server is the most complete version of the SYSTRAN engine, capable of providing a very large number of internet users with exceptional response times.

The products' productivity tools and web interface are identical to those of SYSTRAN Enterprise Workgroup Server.

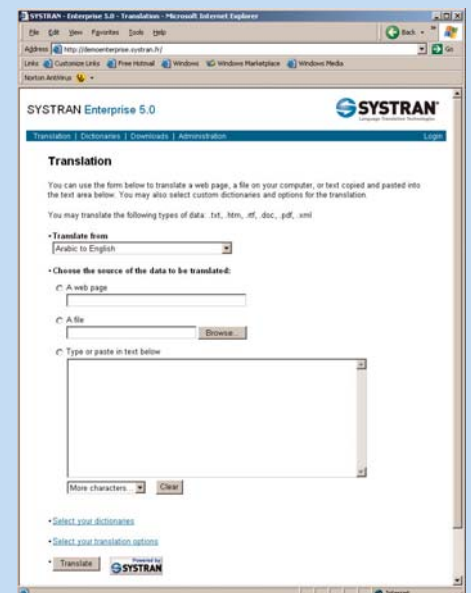
However, the provision of an Open API allows all types of integration with enterprise applications, be it to interface with a company portal, a web content management system, a collaborative tool or production system, the product catalogue, or CRM application. The SYSTRAN translator is incorporated into an automatic translation task within a structured process or simply as support to an integrated application.

Finally, SYSTRAN Enterprise Global Server includes a very powerful tool allowing you to benefit from XML structures. With this tool, SYSTRAN Translation Stylesheet, you can highly personalise the automatic translation according to XML document structure analysis. A structured XML database can be intelligently addressed by SYSTRAN to translate texts according to XML tags. This function is particularly suited to integrating SYSTRAN with knowledge bases, catalogues, operating files, small advertising sites, etc.

SYSTRAN Enterprise Global Server therefore provides you with all the facets of enterprise automatic language translation and allows you to apply this service to several departments or information system applications in a consistent and coherent way.

The Benefits

- A permanently available service
- Instant translations
- Translation cost is independent from content volume
- A wide coverage of language pairs
- Direct access to translation from Windows, an intranet page or a Microsoft Office application toolbar
- Centralised personalisation accessible by all, for consistent translations
- Powerful terminological resource management tools
- Simple integration in the company information system
- A system which can evolve from an individual user to large internet portals



The portal Home Page to SYSTRAN is easily customisable to integrate smoothly within the corporate intranet

Hardware Configuration

- Intel Pentium (1GHz or more), or Sun SPARC (1GHz or more)
- 1Gb RAM memory or more
- 160 Mb disk space plus 60 Mb per language pair
- 500 Mb disk space available during installation

Software Configuration

- Windows Server (2000 SP4, 2003) or Solaris (SPARC) or Linux (RedHat Enterprise)
- Multi platform versions : JBoss Application Server
- Desktop : Windows (2000 SP4, XP)
- Web Browser
- Microsoft Office (2000, XP, 2003)

Technical Support

SYSTRAN offers a technical support service by e-mail and hotline. To read more about our support, visit :

www.systransoft.com/support

About SYSTRAN

SYSTRAN is world leader in automatic language translation technologies and markets innovative products and solutions for individual workstations, enterprise applications and online services which facilitate multilingual communication thanks to 40 language pairs and 20 industry-specific dictionaries.

Over 30 years of research and development means SYSTRAN is the technology of reference for multinational companies, large internet portal players: Google, Yahoo!, AltaVista and Wanadoo, and public organizations such as the US Intelligence Community and European Commission.

SYSTRAN has its headquarters in Paris France and a subsidiary in San Diego, California (USA).

SYSTRAN is listed on Eurolist Compartiment C of Euronext Paris and is member of Euronext's NextEconomy segment.

SYSTRAN S.A.

La Grande Arche. 1, Parvis de la Défense
92044 Paris La Défense Cedex
FRANCE
Tel: +33 (0)1 47 96 86 86

SYSTRAN Software, Inc.

9333 Genesee Avenue, Suite PL1
San Diego, CA 92121
USA
Tel: +00 (1) 858 457 1900

SYSTRAN, SYSTRAN Professional Premium, SYSTRAN Dictionary Manager, SYSTRAN Toolbar, and SYSTRAN Translation Project Manager are trademarks from SYSTRAN.

All others trademarks are registered by their respective owners.

© SYSTRAN 2006. All rights reserved.

The SYSTRAN Enterprise Product Range

Whether you are a small company or a large international organization, SYSTRAN offers you a solution adapted to your needs.

- SYSTRAN Enterprise Workgroup Server
- SYSTRAN Enterprise Global Server

With these products, you can envisage incorporating automatic translation in your company applications :

- To add a translation service to your Intranet and allow improved international communication between your collaborators
- To equip your portal with a translation solution and your knowledge bases in several languages
- To publish your information in multiple languages
- To increase the power of your scientific and technical surveillance of information in foreign source languages.

	SYSTRAN Enterprise Workgroup Server 5.0	SYSTRAN Enterprise Global Server 5.0
Components		
Online Translation Tools	✓	✓
Windows Applications: SYSTRAN Toolbar SYSTRAN Dictionary Manager SYSTRAN Translation Project Manager SYSTRAN Specialised Dictionaries	✓ ✓ ✓ ✓	✓ ✓ ✓ ✓
Online Services (option) SYSTRANLinks SYSTRANBox SYSTRANet		✓ ✓ ✓
Web page translation	✓	✓
Microsoft Office documents translation	✓	✓
Non protected PDF files translation	✓	✓
User Dictionaries	✓	✓
Translation Memories	✓	✓
Administration		
Statistics	✓	✓
Translation Profiles	✓	✓
Advanced Features		
Customisable Web Interface	✓	✓
User Profile Management		✓
Open API		✓
Language automatic detection		✓
Cache Management		✓
SYSTRAN Translation Stylesheet		✓
XML document support		✓
Cluster mode, load balancing Front End / Back End configurations		✓ ✓
Operating Systems		
Windows 2000 SP4 All Server configurations	✓	✓
Windows 2003 All Server editions	✓	✓
Solaris (SPARC)		✓
Linux (RedHat Enterprise)		✓

www.systran.fr

www.systransoft.com

